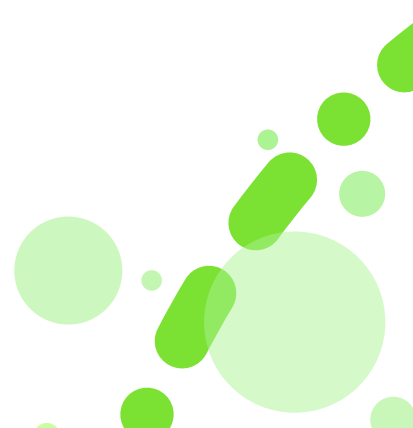




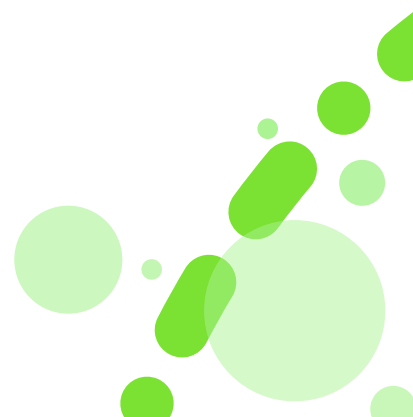
# SHL Release Notes

12 July 2024



## Table of Contents

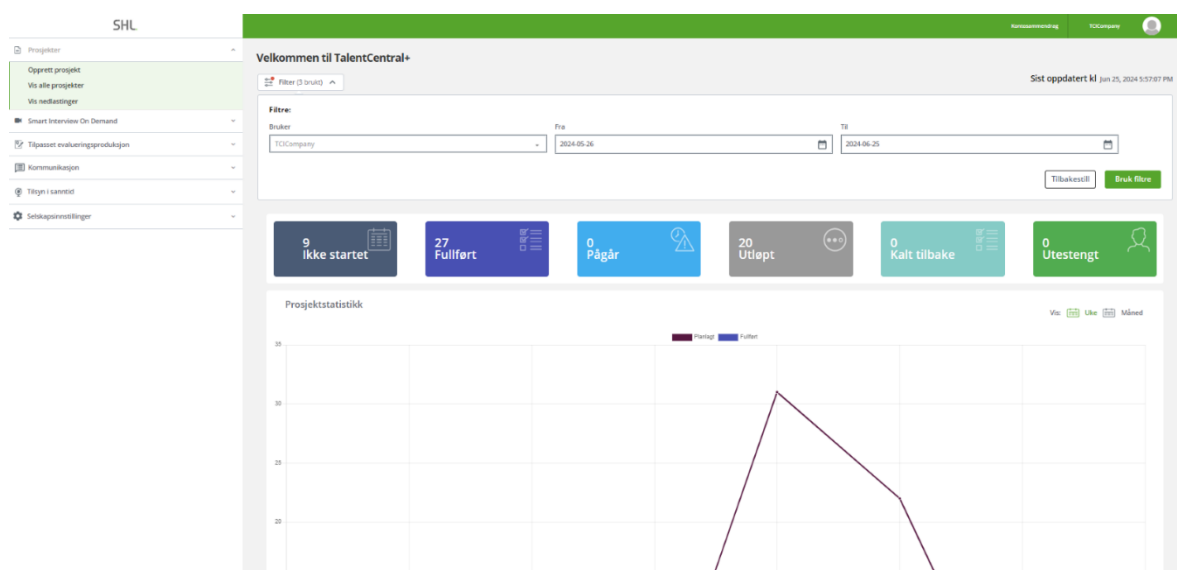
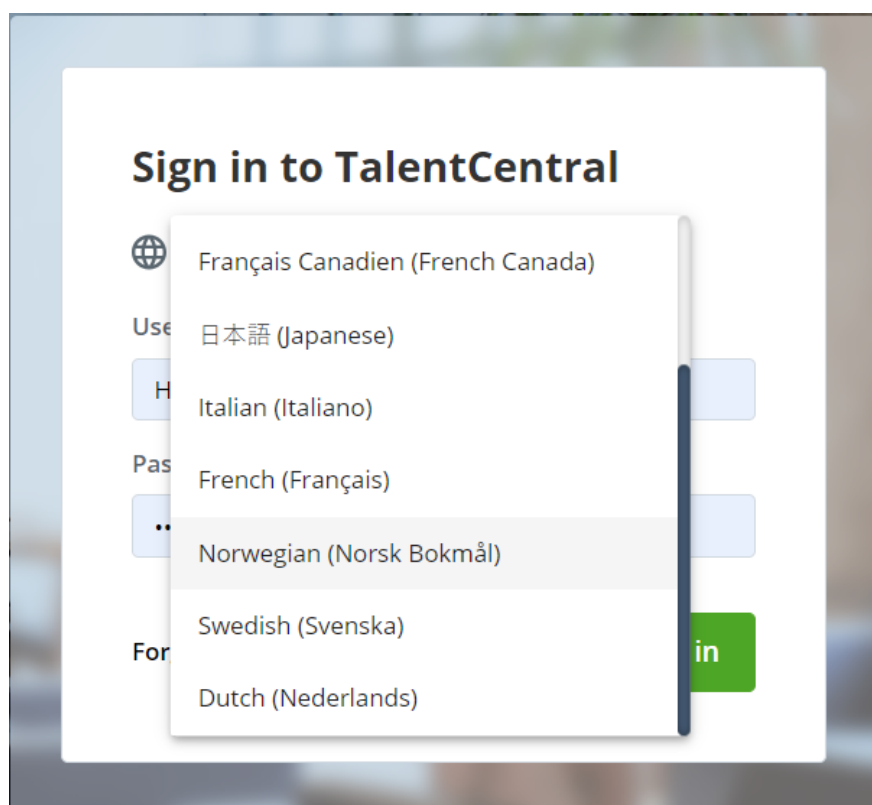
<b>New Interface Languages Added on TalentCentral+ : Norwegian, Dutch, Swedish, French, and Italian .....</b>	<b>3</b>
<b>Candidate Experience: Enhanced Device Testing Screen .....</b>	<b>6</b>
<b>Content Language Releases .....</b>	<b>9</b>



## New Interface Languages Added on TalentCentral+ : Norwegian, Dutch, Swedish, French, and Italian

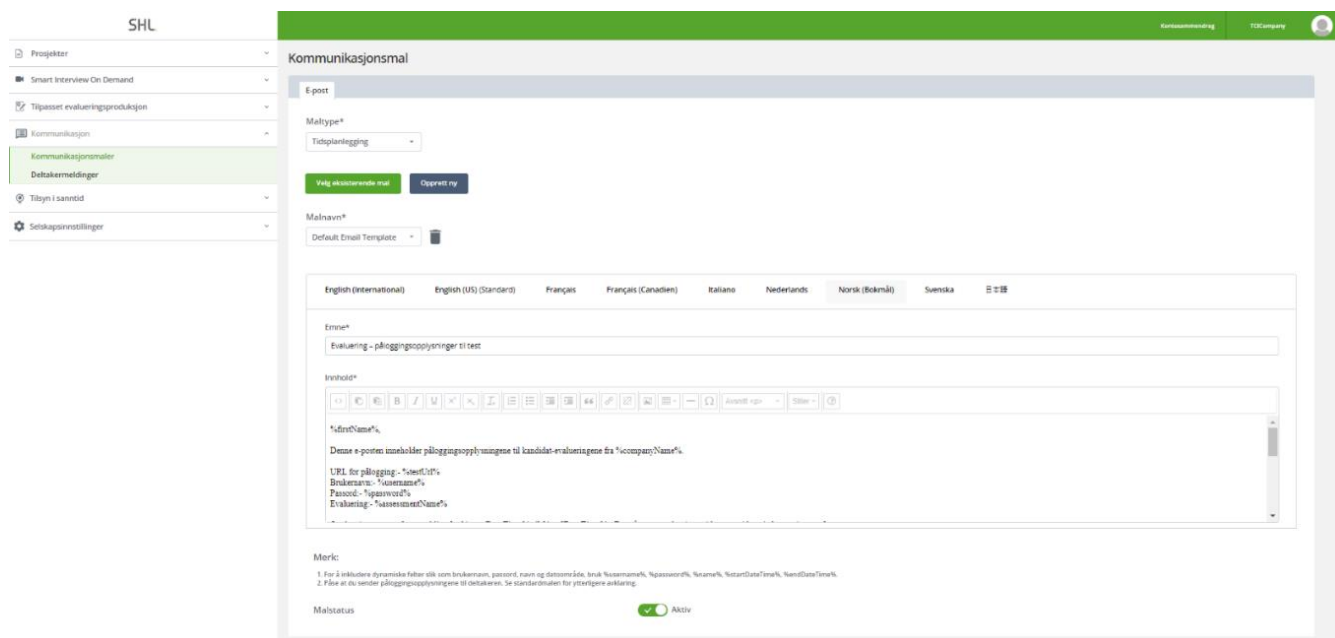
We're excited to announce the addition of five new interface languages, including Norwegian, Dutch, Swedish, French, and Italian, to TalentCentral+. With these additions, TalentCentral+ users can easily switch languages, navigate through the platform, and send email communications to participants and recruiters in these new languages.

### How to access the new languages

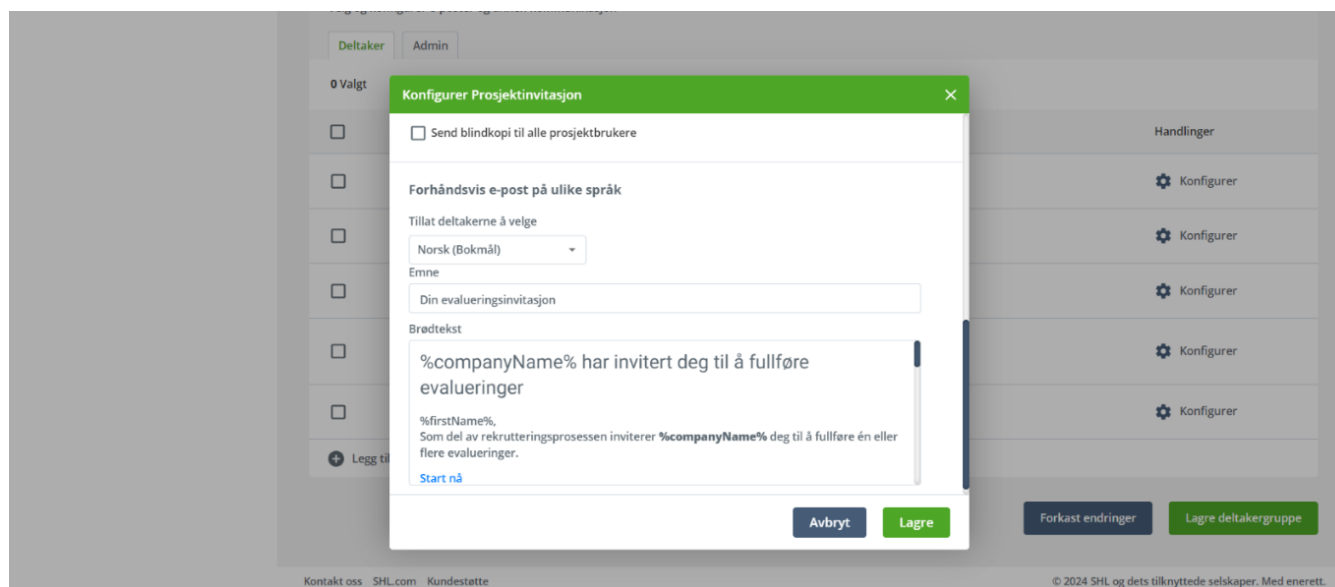


Users can localise TalentCentral+ in any of the new languages by selecting the desired language from the language selection on the login screen or the language selection after login from profile dropdown. Once the language is selected, the interface will be localised in the select language.

## Emails in the new languages



All the standard email templates for participants and recruiters can now be sent in the new languages. User will be able to preview the localised templates from the communications section of TalentCentral+.

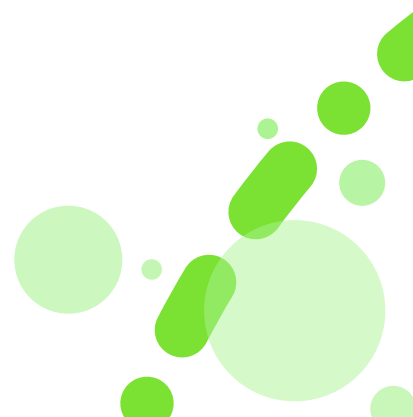


The localised templates can also be scheduled for participants, evaluators, proctors and admins. The rest of the behaviour remains the same on platform.

## Participant and recruiter interface languages –

In conclusion, we are excited to share that our diverse range of participant experience languages include Czech, Danish, German, Greek, English (International & US), Spanish (Spain & Mexico), Finnish, French (Canada & France), Hungarian, Italian, Japanese, Korean, Lithuanian, Latvian, Dutch (Belgium & Netherlands), Polish, Portuguese (Brazil & Portugal), Romanian, Russian, Slovak, Swedish, Thai, Turkish, Simplified and Traditional Chinese, French (Belgium), Icelandic, Bosnian, Macedonian, and Albanian. Recruiters also benefit from a tailored interface available in English (US), Chinese, English (International), French (Canada), Japanese, Italian, French, Norwegian, Swedish, and Dutch. These additions ensure a more inclusive and engaging experience for all users across diverse cultural and linguistic backgrounds.

Platform:		Availability: 1 July 2024	
<input type="checkbox"/>	TalentCentral™	<input checked="" type="checkbox"/>	TalentCentral+™
<input type="checkbox"/>	360/MFS	<input type="checkbox"/>	SHL Apps
<input type="checkbox"/>	Insights		



## Candidate Experience: Enhanced Device Testing Screen

We are excited to announce that we have consolidated camera, microphone and speaker device testing screens into one single screen. This will allow candidates to check device compatibility on one screen rather than navigating across multiple screens.

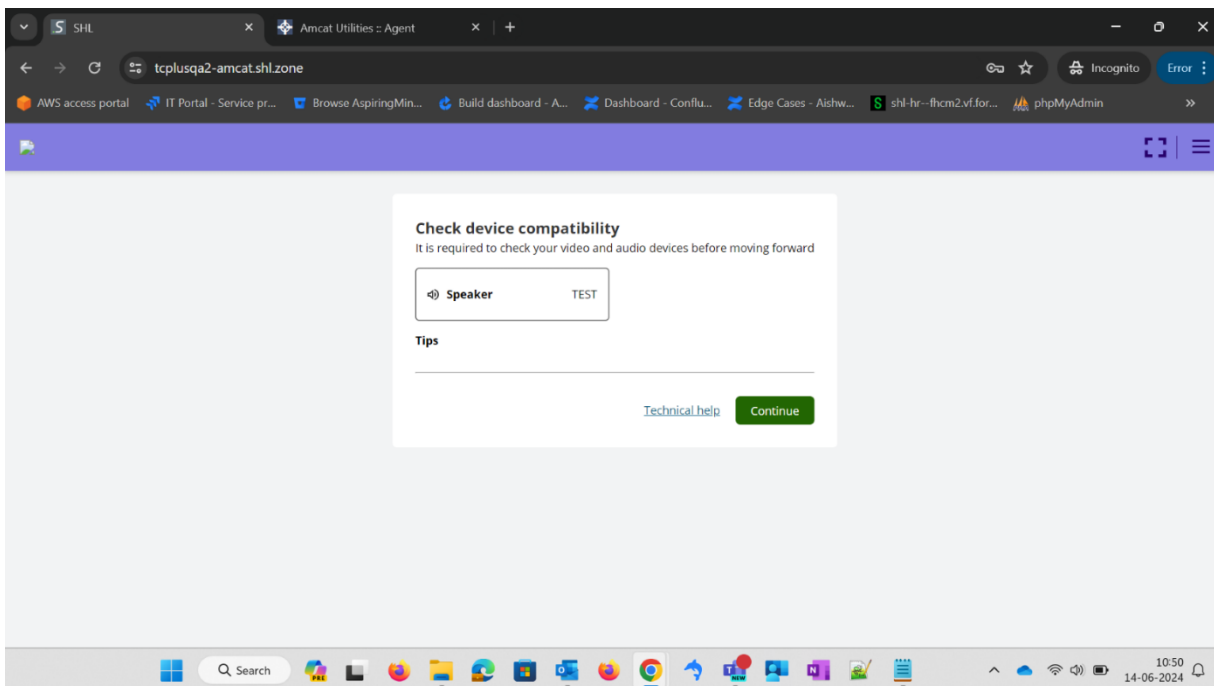
This update focuses on enhancing the usability and functionality of the device testing screen to provide a more streamlined and efficient testing experience for candidates.

### Key Enhancements:

- Improved User Interface (UI):
  - We have redesigned the user interface of the device testing screens to be more intuitive and visually appealing.
  - With consolidation, candidates will be able to save time in assessment workflow by quickly testing all camera, microphone, and speaker in one single screen.
- Configurable Screen:
  - This new screen is configurable such that camera, microphone and speaker testing functionalities can be turned on/ off based on the client request to SHL.

### New Screens:

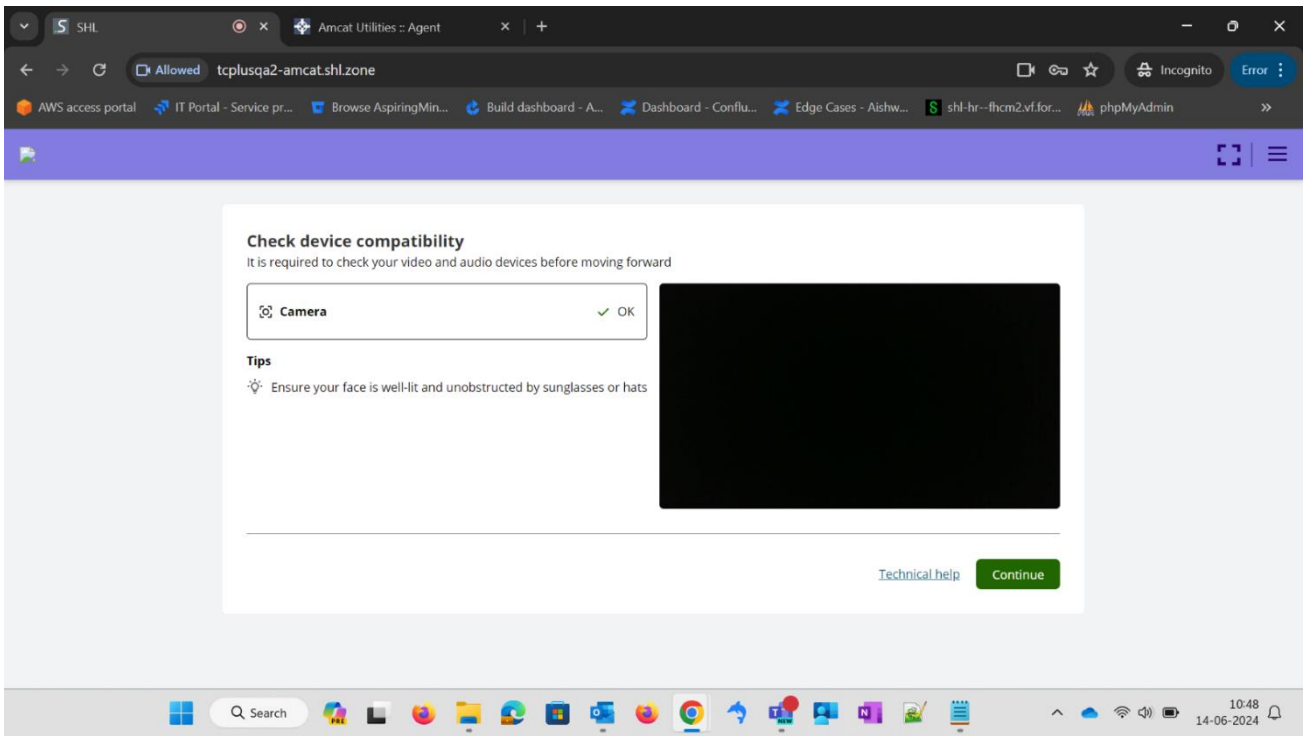
#### Audio:



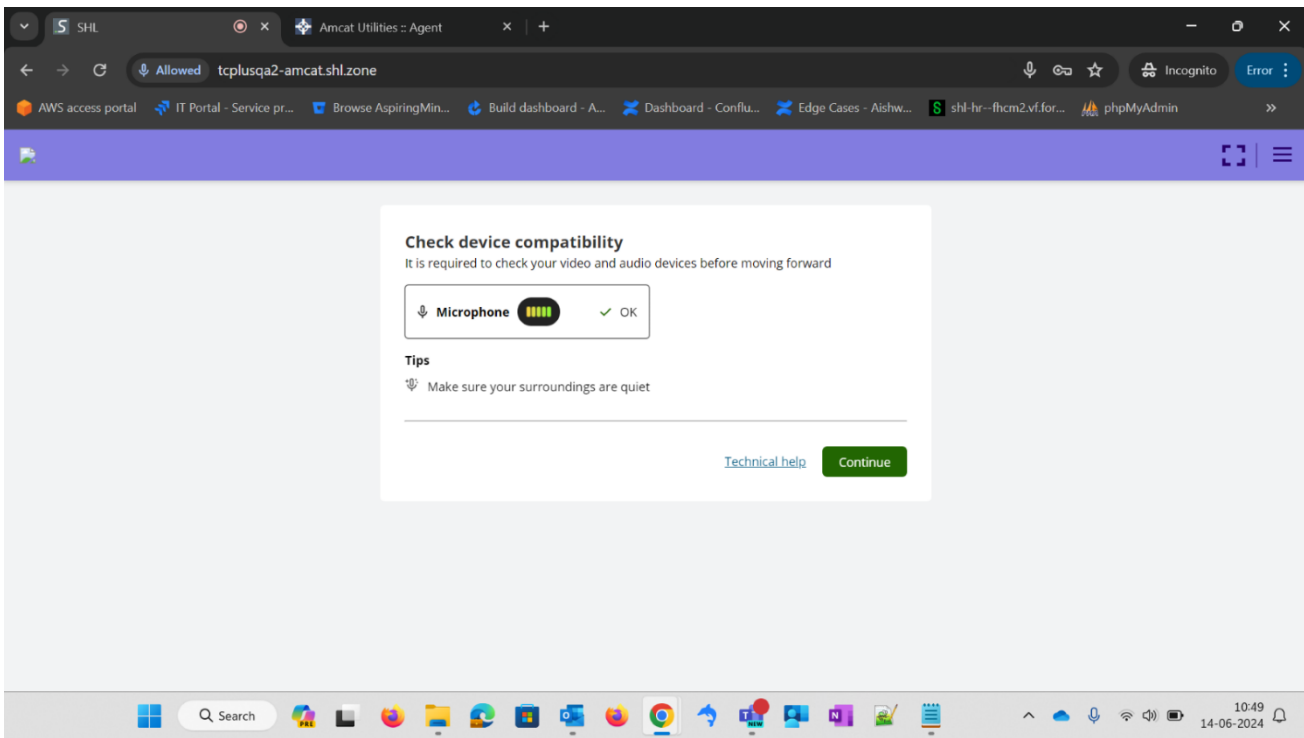
#### Camera:

Version: 1.0 | Last updated: 12 July 2024

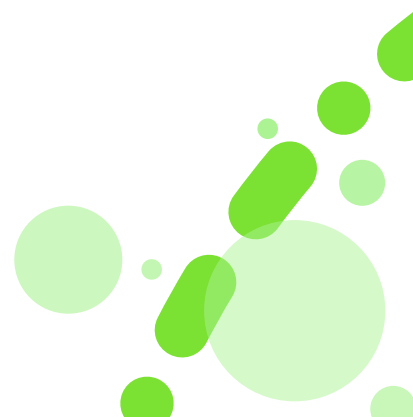
© 2024 SHL and/or its affiliates. All rights reserved. | Page 6 of 9

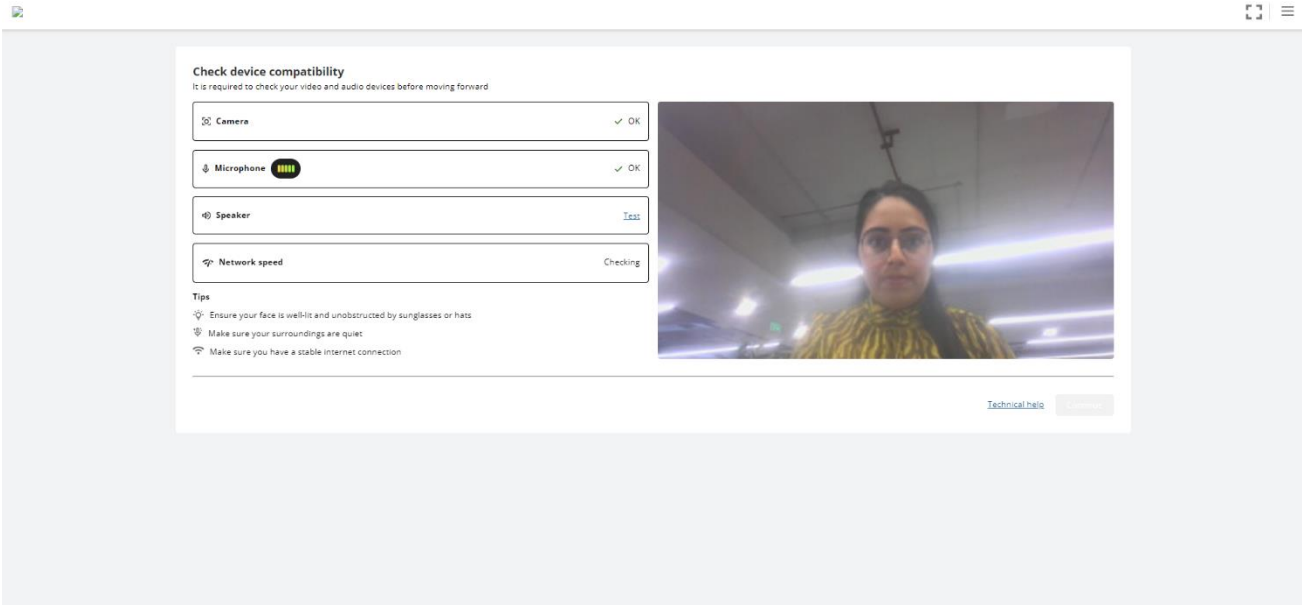


Microphone:



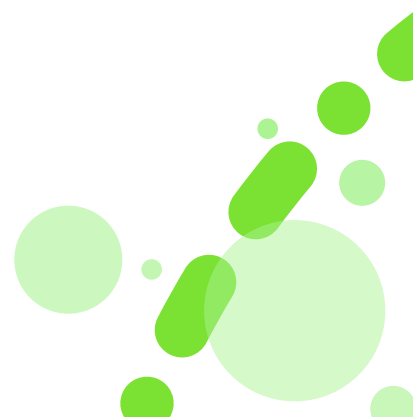
All Enabled:





Rollout will be automatic for customers already using device testing as part of the assessment workflow. Those not yet using it can speak to their account managers about enablement

<b>Platform:</b>				<b>Availability:</b> 08 July 2024
<input type="checkbox"/>	TalentCentral™	<input checked="" type="checkbox"/>	TalentCentral+™	
<input type="checkbox"/>	360/MFS	<input type="checkbox"/>	SHL Apps	
<input type="checkbox"/>	Insights			





## Content Language Releases

### Verify Interactive

Product	Language
Checking (2022)	Indonesian
General Ability Screen	Turkish

### OPQ Reports

Product	Language
Manager Plus 2.0	French Finnish Swedish

### JFA

Product	Language
Graduate 8.0 (Southeast Asia Norm)	International English

Platform:		Availability: 26 June 2024	
<input checked="" type="checkbox"/>	TalentCentral™	<input type="checkbox"/>	TalentCentral+™
<input type="checkbox"/>	360/MFS	<input type="checkbox"/>	SHL Apps
<input type="checkbox"/>	Insights		

