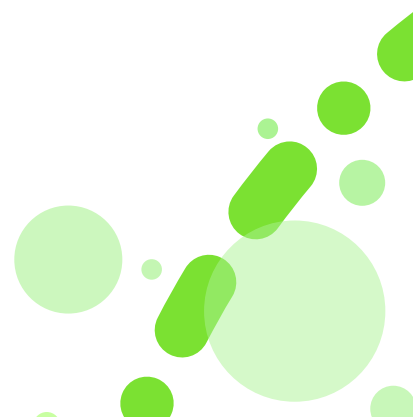




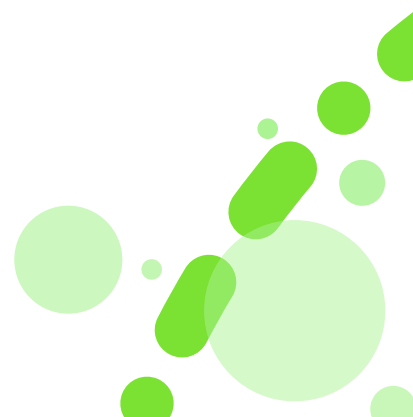
# SHL Release Notes

25 January 2024



## Table of Contents

|   |   |
|---|---|
| <b>Verify Interactive – Process Monitoring Assessment</b> ..... | 3 |
| <b>Product Availability</b> .....                               | 4 |



## Verify Interactive – Process Monitoring Assessment

### What is the Verify Interactive – Process Monitoring?

The SHL Verify range of ability tests is a suite of cognitive ability assessments appropriate for candidates at a wide range of job levels. The SHL Process Monitoring assessment is designed for candidates in a wide range of industries where following processes, ensuring vigilance and maintaining machinery are important aspects of the job role. It measures candidates' ability to respond in a timely manner to instrument feedback and monitor variations in a production process to maintain the process within specified safe control limits.

### Why did we build Verify Interactive – Process Monitoring?

We have identified a market need for a gamified measure of process monitoring that can serve customers in manufacturing, industrial, supply chain, logistics, aviation, and other sectors.

This is the first of its kind game-based simulation measuring a candidate's process monitoring ability.

### What is the customer impact of Verify Interactive – Process Monitoring?

This game-based assessment offers candidates a uniquely engaging and interactive experience. It is available to new and existing customers via SHL's TalentCentral+ platform.

### What does Verify Interactive – Process Monitoring Look like?



| Platform:                |                | Availability: 25 January 2024       |                 |
|--------------------------|----------------|-------------------------------------|-----------------|
| <input type="checkbox"/> | TalentCentral™ | <input checked="" type="checkbox"/> | TalentCentral+™ |
| <input type="checkbox"/> | 360/MFS        | <input type="checkbox"/>            | SHL Apps        |
| <input type="checkbox"/> | Insights       |                                     |                 |

## Product Availability

### Reports

| Product  | Language   |
|--|------------|
| Sales Transformation Recruiter Report (Individual Contributor) | Polish     |
| Sales Transformation Recruiter Report (Manager)                | Polish     |
| OPQ Candidate Report   | US English |
| MQ Employee Motivation Report                                  | Hungarian  |

### Verify

| Product                  | Language   |
|--------------------------|--|
| General Ability Screener | Japanese   |
| G+ Short                 | Turkish  |
| Verify Candidate Report  | Swedish  |
| Verify Interactive Norms | <ul style="list-style-type: none"> <li>• Deductive Reasoning General Population (Middle East)</li> <li>• G+ General Population (Middle East)</li> <li>• Inductive Reasoning General Population (Middle East)</li> <li>• Numerical Reasoning General Population (Middle East)</li> <li>• G+ Manager Composite (South Africa)</li> <li>• Inductive Reasoning Manager Composite (South Africa)</li> <li>• Numerical Reasoning Manager Composite (South Africa)</li> <li>• G+ Advanced Graduate (China)</li> </ul> |

## Skills Tests

| Product | Language   |
|---------|------------|
| GitHub  | US English |
| SAP GRC | US English |

| Platform:                           |                | Availability: 23 January 2024 |                 |
|-------------------------------------|----------------|-------------------------------|-----------------|
| <input checked="" type="checkbox"/> | TalentCentral™ | <input type="checkbox"/>      | TalentCentral+™ |
| <input type="checkbox"/>            | 360/MFS        | <input type="checkbox"/>      | SHL Apps        |
| <input type="checkbox"/>            | Insights       |                               |                 |

