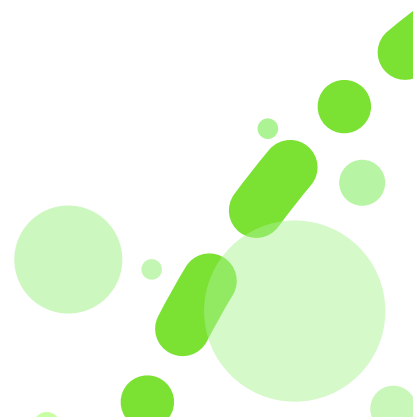




# SHL Release Notes

25 August 2023



## 15 mins early entry for Interviewers - Improvement

### What is this 15 mins early entry for Interviewers feature?

This is a new capability in Smart Interview Live (SIL) on TalentCentral+. This new improvement enables interviewers to join a scheduled interview 15 mins earlier than the scheduled time, for example, if an interview is scheduled at 4PM, an interviewer will be able to join the interview at 3:45PM. However, the candidates can only join the interview at the scheduled time.

Using the above example, the below listed features will remain disabled till the interview start time begins.

• Audio and Video setting	• Notes	• Invite others
• Grid View	• Question comments	• End interview
• Screen Share	• Chat	• Rating on questions
• See Question response	• Rating	• Interview timer

Without requiring a refresh, these functionalities will be immediately activated at the time of the scheduled interview. As soon as the interviewer joins, a quick tour will go through all the features, and for a better understanding, the interviewer can use hover text by pointing at any feature icon.

Continuing with the above example, the below features will remain enabled for an interviewer to use even before the interview start time (time from 3:45PM till 4:00PM).

- Question panel – Interviewer can see added questions, search and can add questions.
- See candidate report (if any)
- See candidate resume (if any)
- Settings - to change language and font size.

### Why did we build this 15 mins early entry for Interviewers feature?

In interviews often interviewers use pre-defined questions setup by recruiters, hence there is a need for interviewers to prep for the questions before the interview starts. With this improvement, interviewer can make themselves familiar with the questions added by the recruiters as well as the interview player interface experience, and during that time they will have only a read only access to all the action items in the UI and will be able to view only the questions added, see a candidate report and resume. This makes interviewers more confident and comfortable during the interview.

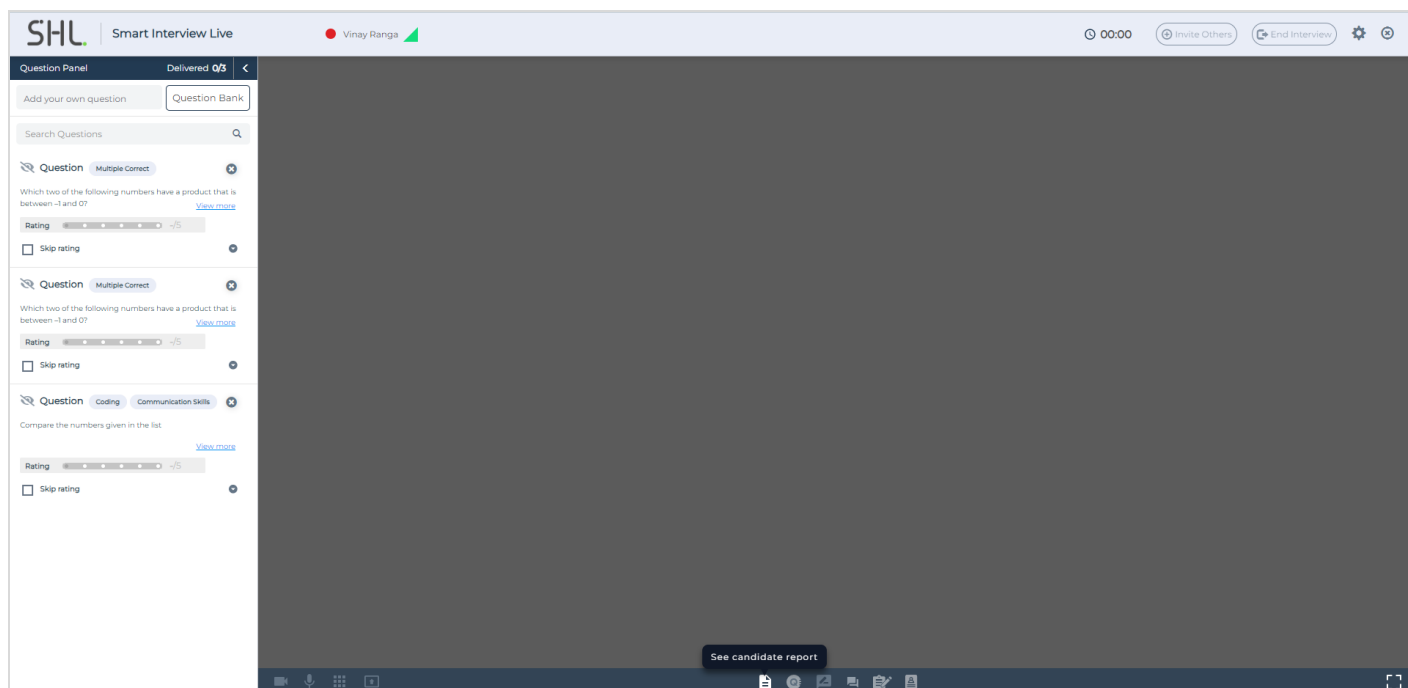
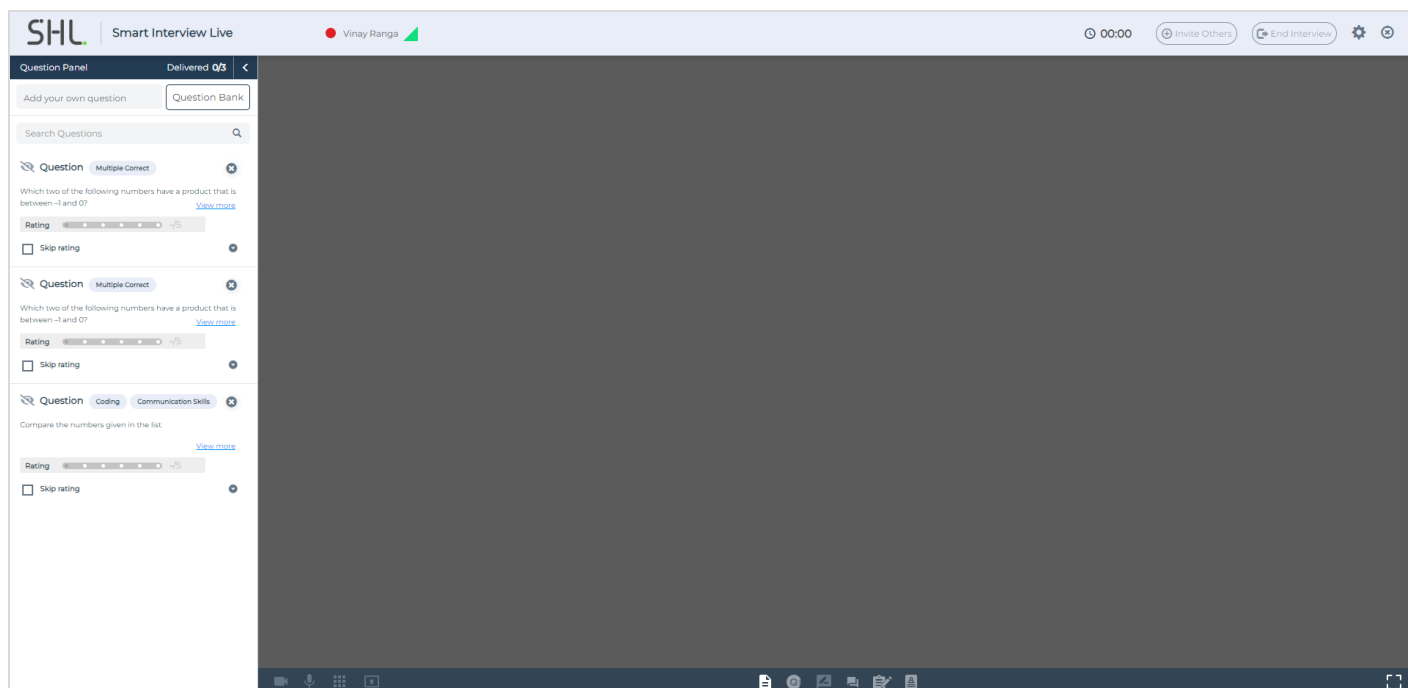
### What is the customer impact of 15 mins early entry for Interviewers feature?

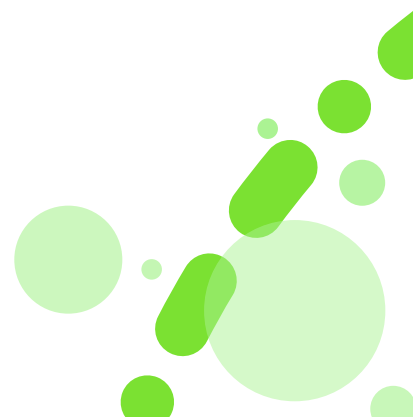
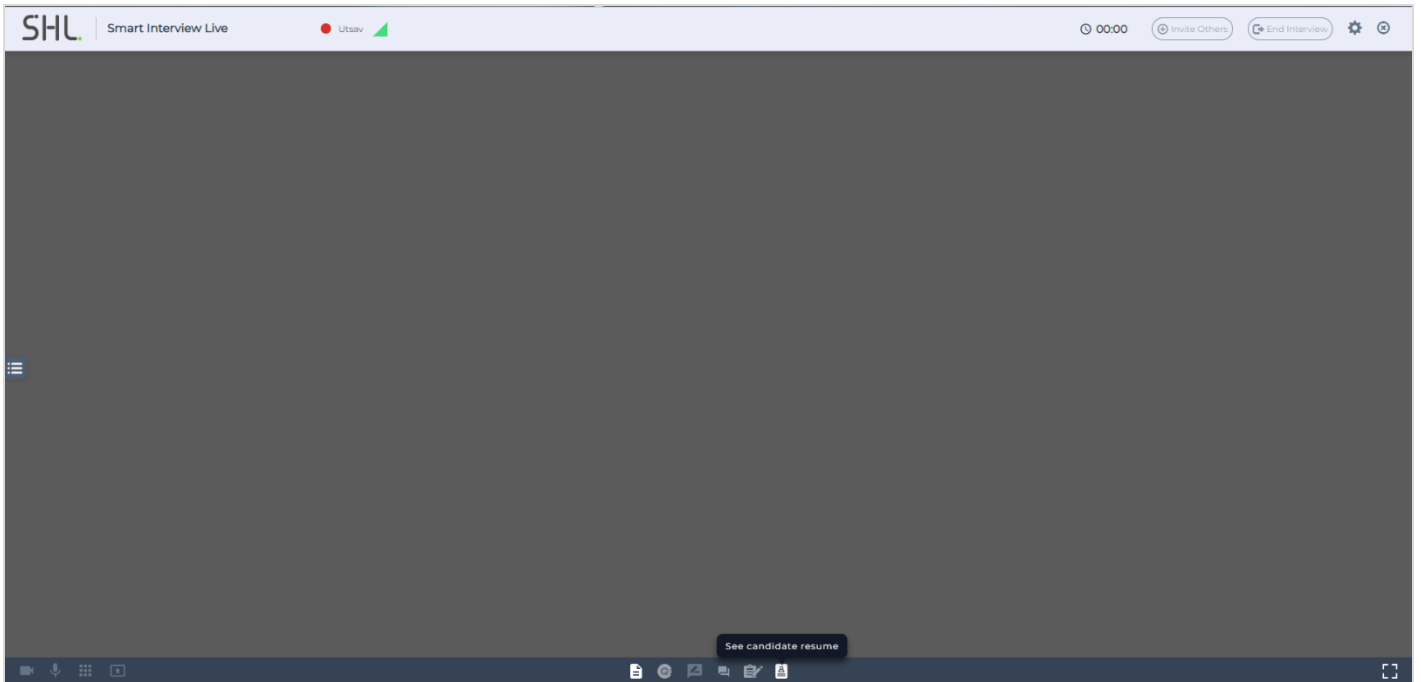
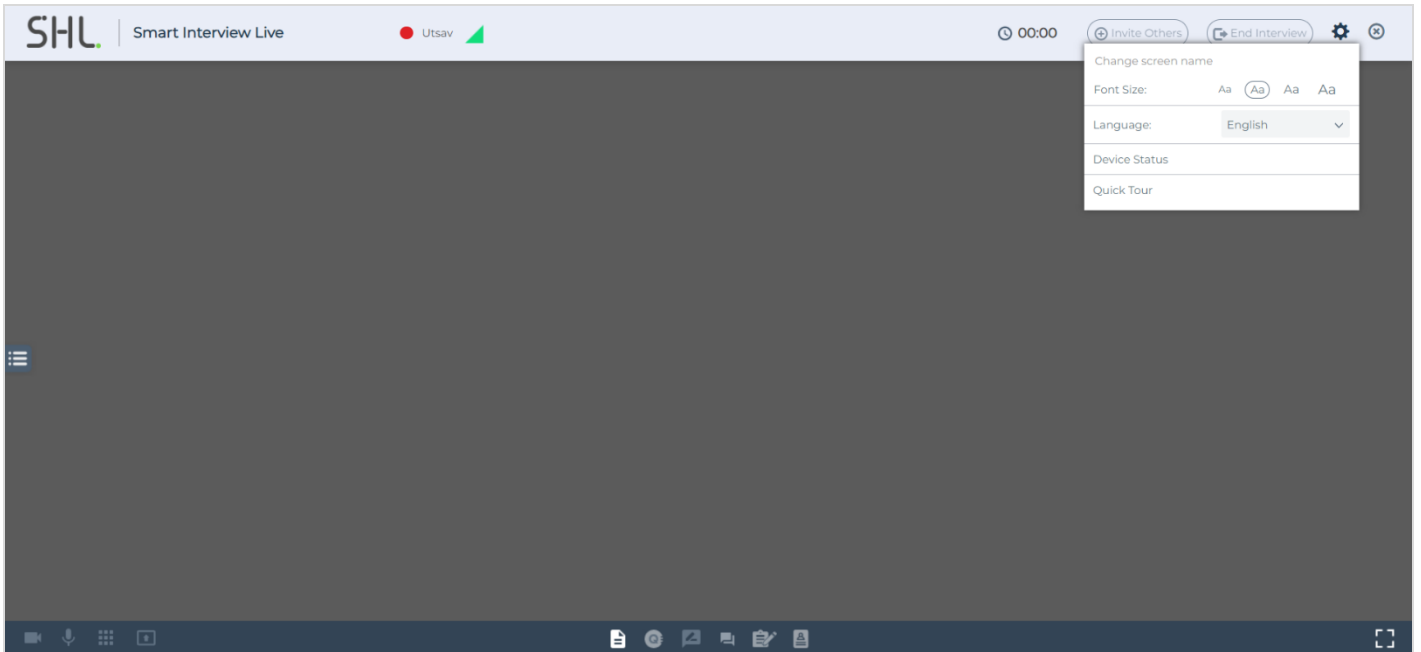
Both our existing and new customers will get to see this new feature when they start using Smart Interview Live (SIL). This is a standard feature improvement and requires no additional request to enable it.

## What does this 15 mins early entry for Interviewers feature look like?

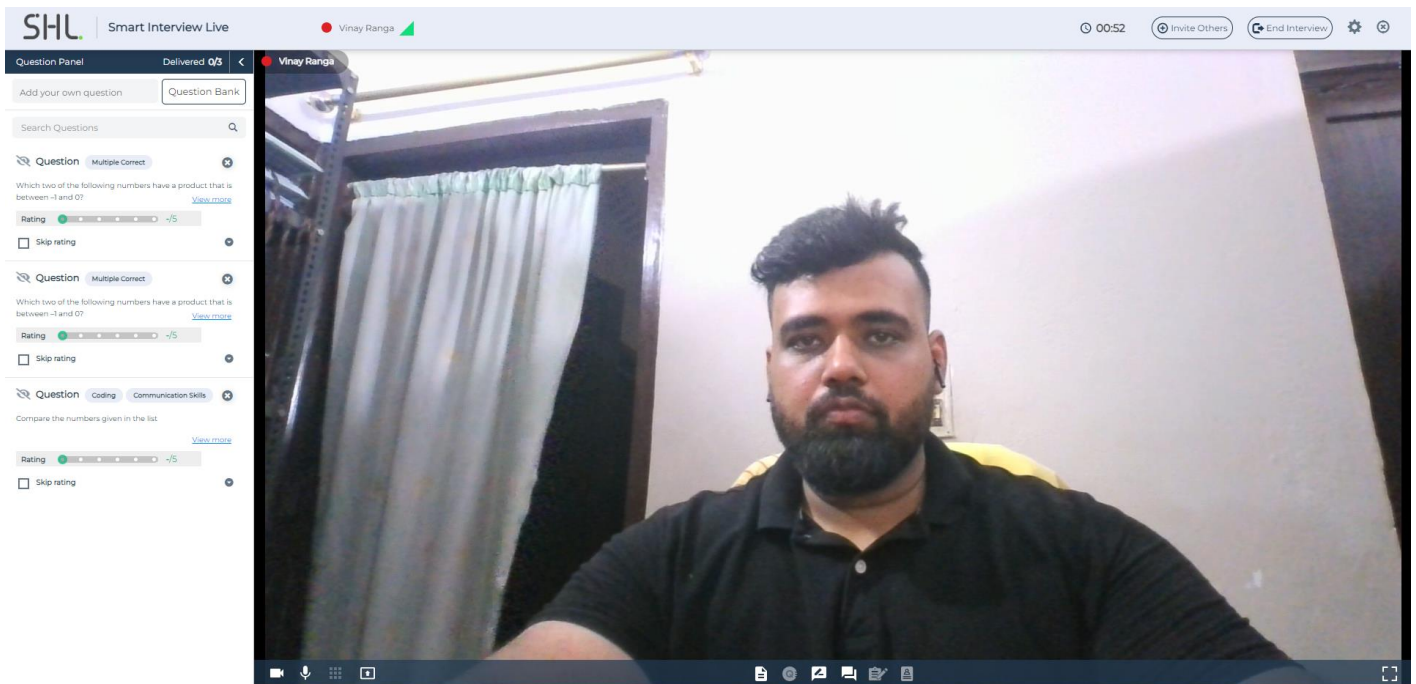
### Interviewer experience:

- A. 15 mins before the interview time, the 'Question panel', 'See candidate report', 'Settings', and 'See candidate resume' features are enabled. (Refer below screenshots respectively)

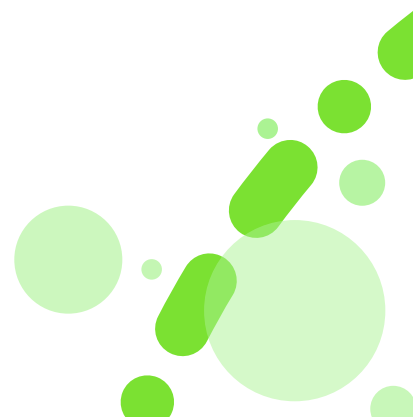




B. After the interview start time, rest of the features get enabled.



<b>Platform:</b>		<b>Availability:</b> 11th August 2023	
<input type="checkbox"/>	TalentCentral™	<input checked="" type="checkbox"/>	TalentCentral+™
<input type="checkbox"/>	360/MFS	<input type="checkbox"/>	SHL Apps
<input type="checkbox"/>	Insights		



## Product Availability - TM Report Updates

Product	Language
Hipo Assessment Report	Italian
Sales Transformation report Manager (Recruiter)	French
Unlocking Potential Report	International English
Universal Competency Report	US English

Platform:		Availability: 23 August 2023	
<input checked="" type="checkbox"/>	TalentCentral™	<input type="checkbox"/>	TalentCentral+™
<input type="checkbox"/>	360/MFS	<input type="checkbox"/>	SHL Apps
<input type="checkbox"/>	Insights		

